

Level 3

3W 3 West (Thoracic)

3E 3 East (Cardiac and General Surgery)

NSD National Service Division

CIS CIS Team

H2 HDU 2

H3 HDU 3

IC1 ICU 1

IC2 ICU 2

N Nurses station

Hand hygiene stations

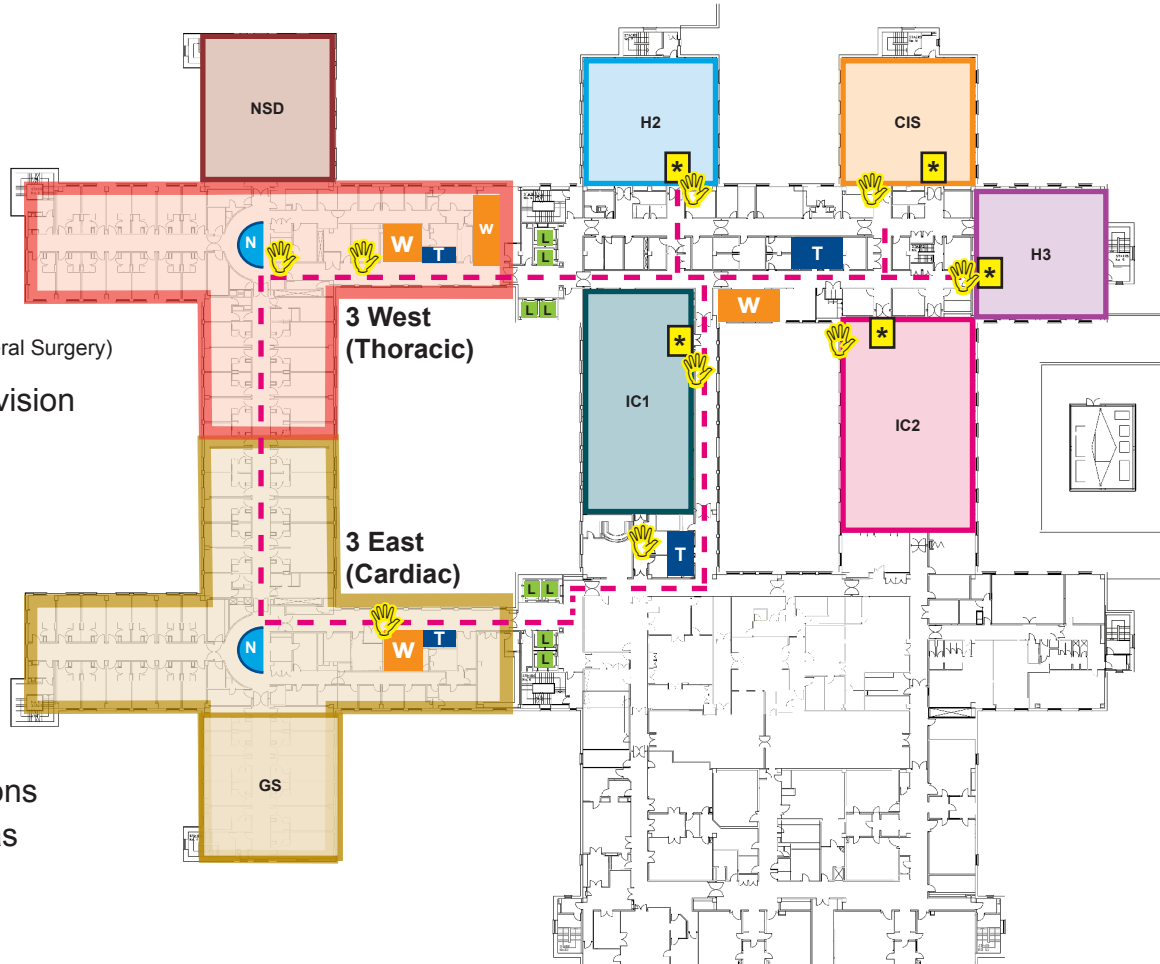
W Patient waiting areas

T Toilets

L Lifts

- - - Main corridors

***** Preferred entrance



All other unmarked areas are staff only or areas you will be escorted to