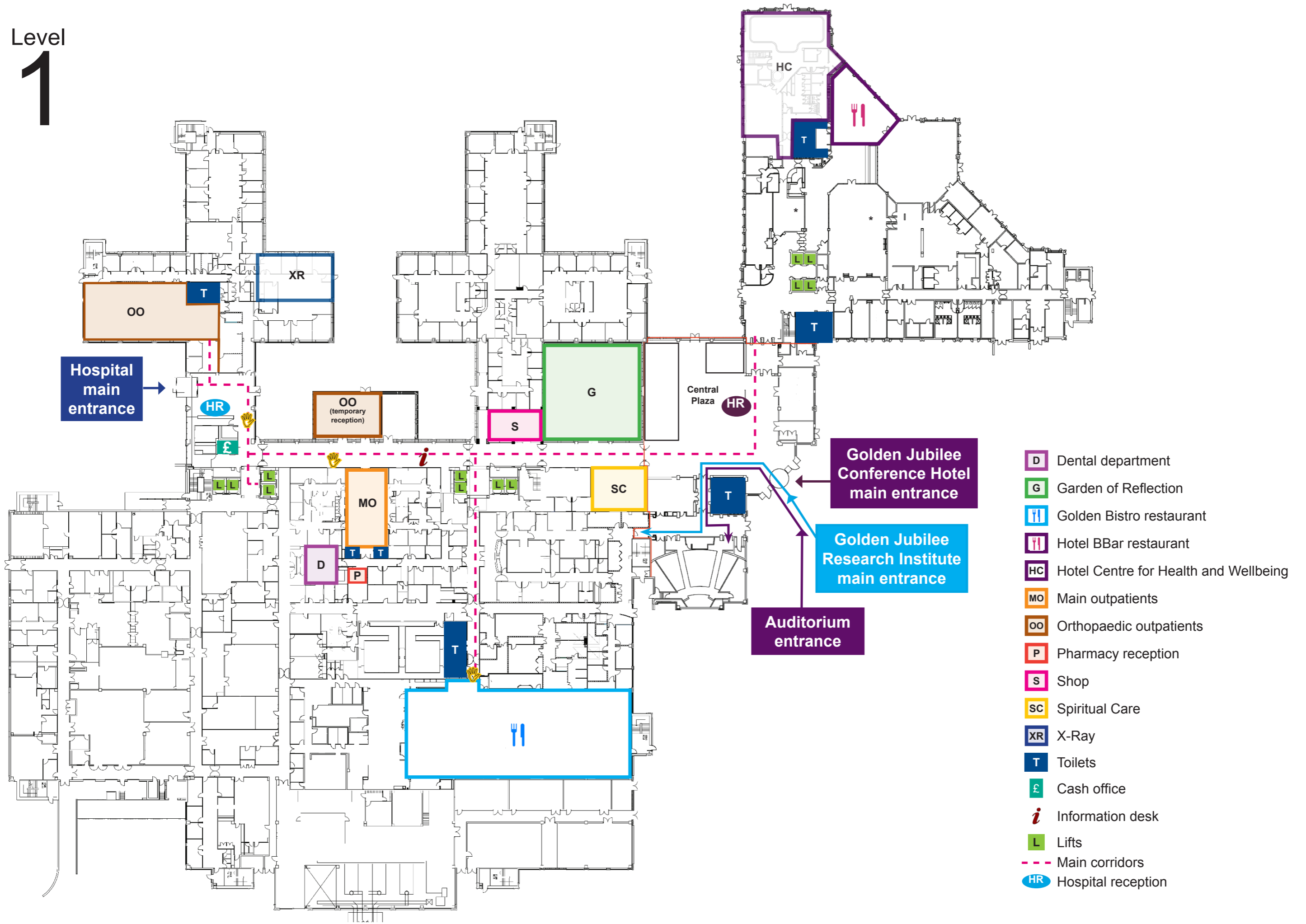


Level 1



- D Dental department
- G Garden of Reflection
- 🍴 Golden Bistro restaurant
- 🍴 Hotel BBar restaurant
- HC Hotel Centre for Health and Wellbeing
- MO Main outpatients
- OO Orthopaedic outpatients
- P Pharmacy reception
- S Shop
- SC Spiritual Care
- XR X-Ray
- T Toilets
- £ Cash office
- i Information desk
- L Lifts
- Main corridors
- HR Hospital reception

Level 2

- 2E 2 East (Orthopaedics)
- 2W 2 West (Orthopaedics)
- CD Cardiac day unit
- CO Cardiac Outpatients
- CW Cardiology Wards 2C and 2D
- CCU Coronary Care Unit
- DL Discharge Lounge
- RR Radiology Reception
- R Rehabilitation
- N Nurses station
- Hand hygiene stations
- W Patient waiting area
- T Toilets
- L Lifts
- - - Main corridors
- * Preferred entrance



All other unmarked areas are staff only or areas you will be escorted to

Level 3

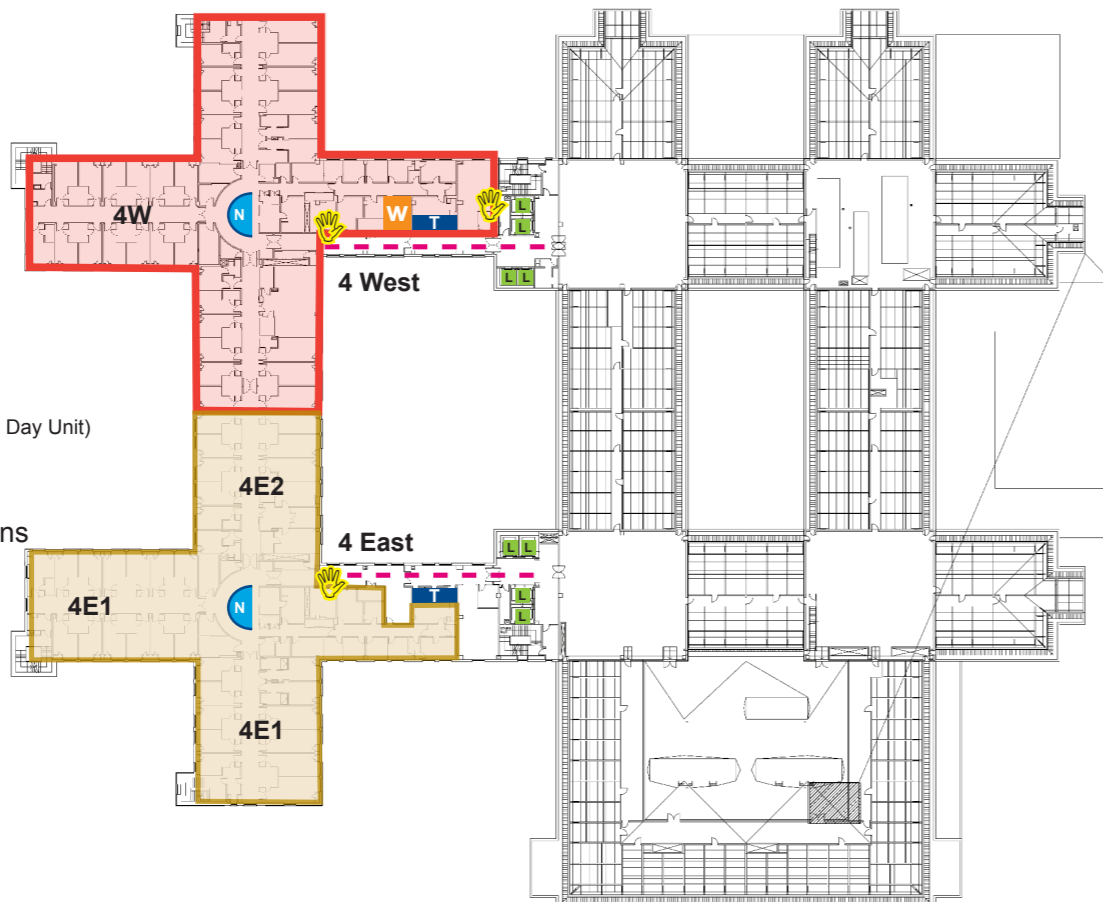
- 3W 3 West (Thoracic)
- 3E 3 East (Cardiac and General Surgery)
- NSD National Service Division
- CIS CIS Team
- H2 HDU 2
- H3 HDU 3
- IC1 ICU 1
- IC2 ICU 2
- N Nurses station
- Hand hygiene stations
- W Patient waiting areas
- T Toilets
- L Lifts
- - - Main corridors
- * Preferred entrance



All other unmarked areas are staff only or areas you will be escorted to

Level 4

- 4E1 Ward 4 East (General Surgery)
- 4E2 Ward 4 East (Orthopaedics)
- 4W Ward 4 West (Surgical Day Unit)
- N Nurses station
- Hand hygiene stations
- W Patient waiting area
- T Toilets
- L Lifts
- - - Main corridors



All other unmarked areas are staff only

Level 5

staff only

